

OFFICIAL

Forth Bridge Experience



SCOTLAND'S RAILWAY
BETTER IN THE MAKING



1. Purpose

To provide an update on the Forth Bridge Experience project, including:

- Project background and overview
- Current status
- Project scope

2. Project Background & Overview

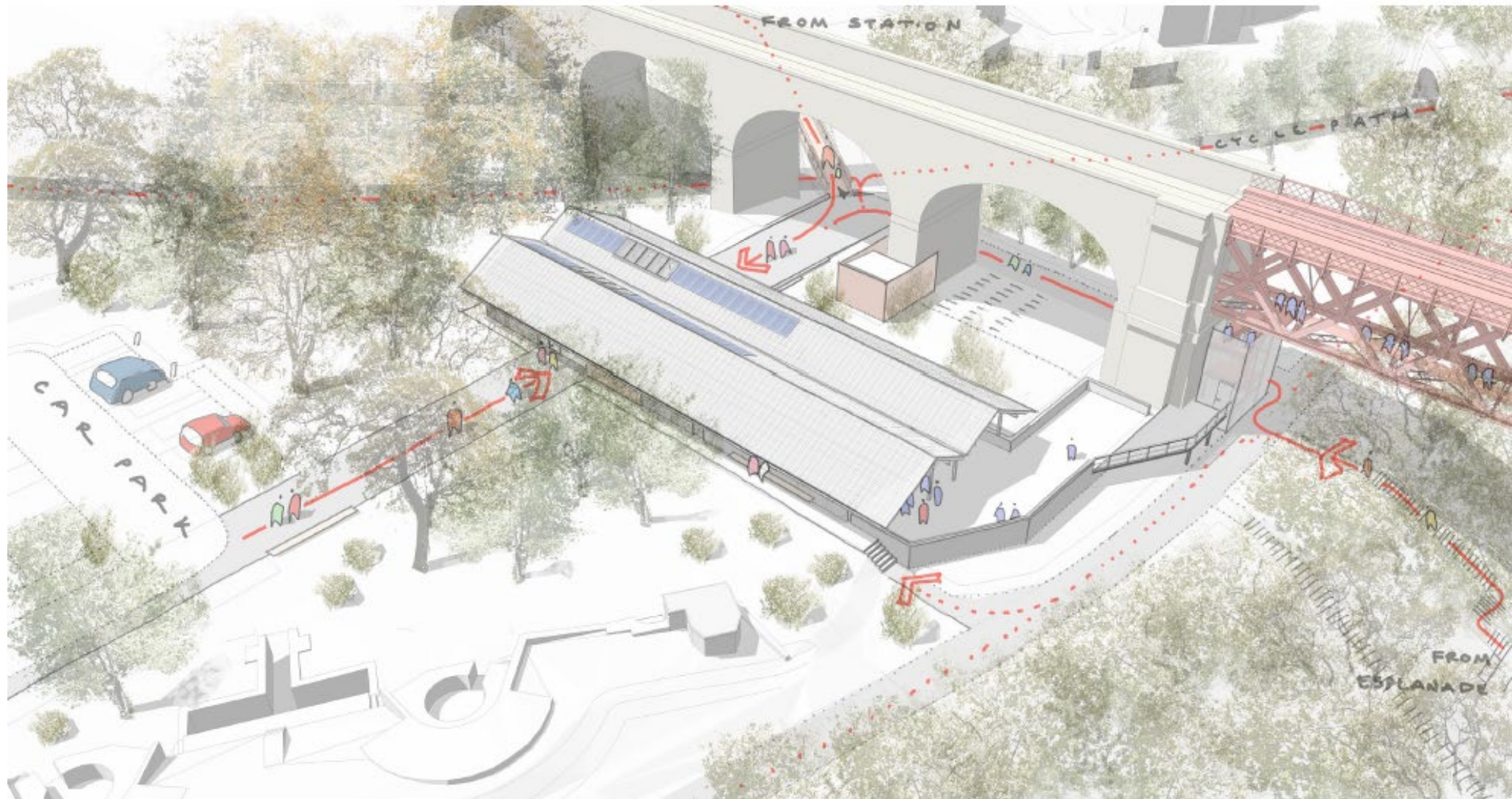
- Network Rail propose to build the 'Forth Bridge Walk Experience', which is intended to "open- up" the Forth Bridge to the general public, creating an enhanced tourist attraction.
- Customers will walk up the south side of the iconic railway bridge, secured safely to the structure and escorted to a viewing platform 110m above sea level.
- The project is split into two parts:
 - Bridge walk infrastructure - alterations to the existing steelwork on the bridge structure to provide the walking route to the top.
 - The Reception Hub - a reception hub, car park, cycling facilities & upgraded path network from Dalmeny station
- The visitor attraction will be operated by a 3rd party.
- Capacity between 85,000 – 130,000 visitors per annum
- The current development work is funded by Transport Scotland
- The project has been redesigned since full planning consent was granted in March 2021.



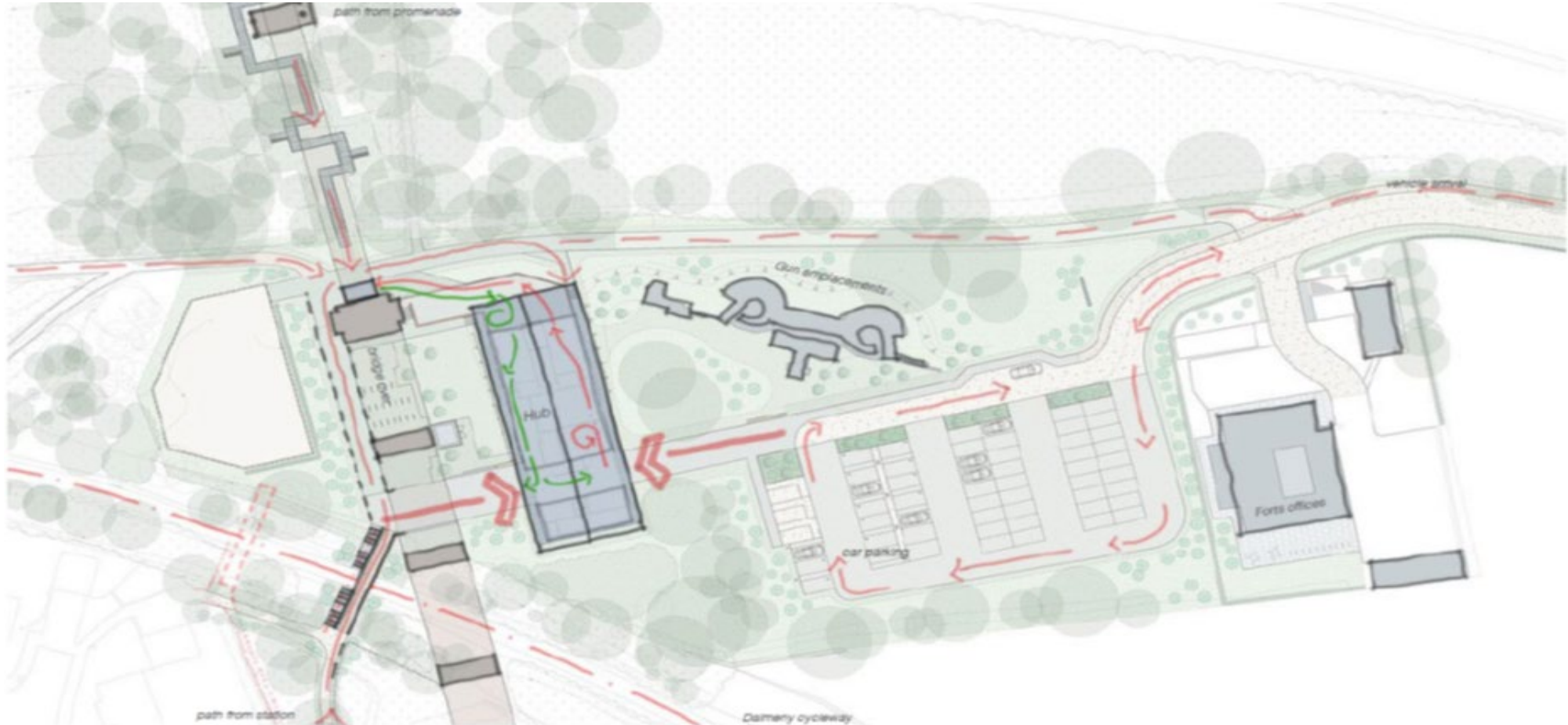
3. Current Status

- NR Designer, ARUP, have completed the outline designs for the project
- Planning consent has been lodged with City of Edinburgh Council with a decision expected in June 2022. Planning committee / hearing scheduled for the 29th June. 12 responses – 3 supporters / 9 objectors (mainly related to car parking)
- Final business case work ongoing – being updated to reflect impact of inflation / COVID on forecast demand
- Procurement exercise ongoing for contractor to build the reception hub

4. Reception Hub building & access routes



3. Reception Hub building – aerial view



Site plan - circulation

3. Visual image of proposed reception hub



3. Visual image of proposed reception hub



4. Bridge walk infrastructure

- Use of existing walkway infrastructure under the approach viaduct at south end of bridge (approx. 500 metres) with minor alterations – ie: two passing places
- New galvanised steel staircase up the Jubilee tower (South Tower)
- Use of existing walkway within the South cantilever trusses with the installation of a new walkway with staircases over cross members to create a circular route on the cantilever
- New viewing platforms (for North & South views) at the top of the South cantilever
- Walkway designed to be visually unobtrusive and within the face of the existing trusses
- Listed building consent required

On Bridge Works

